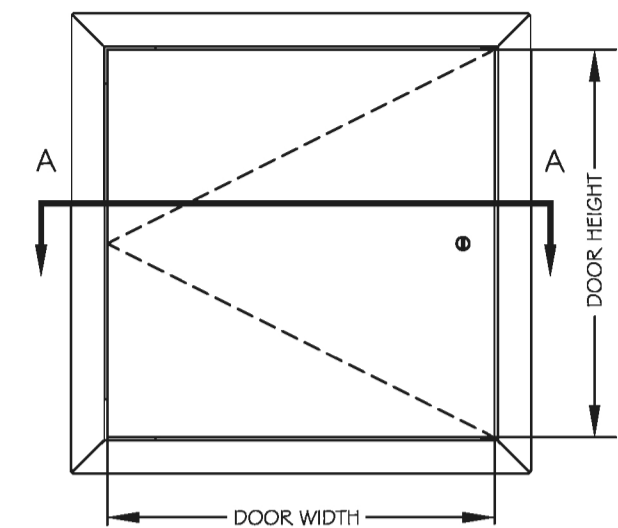


# L-DPM SERIES

## MEDIUM SECURITY NON-RATED ACCESS PANEL FOR WALLS AND CEILINGS - ALL SURFACES



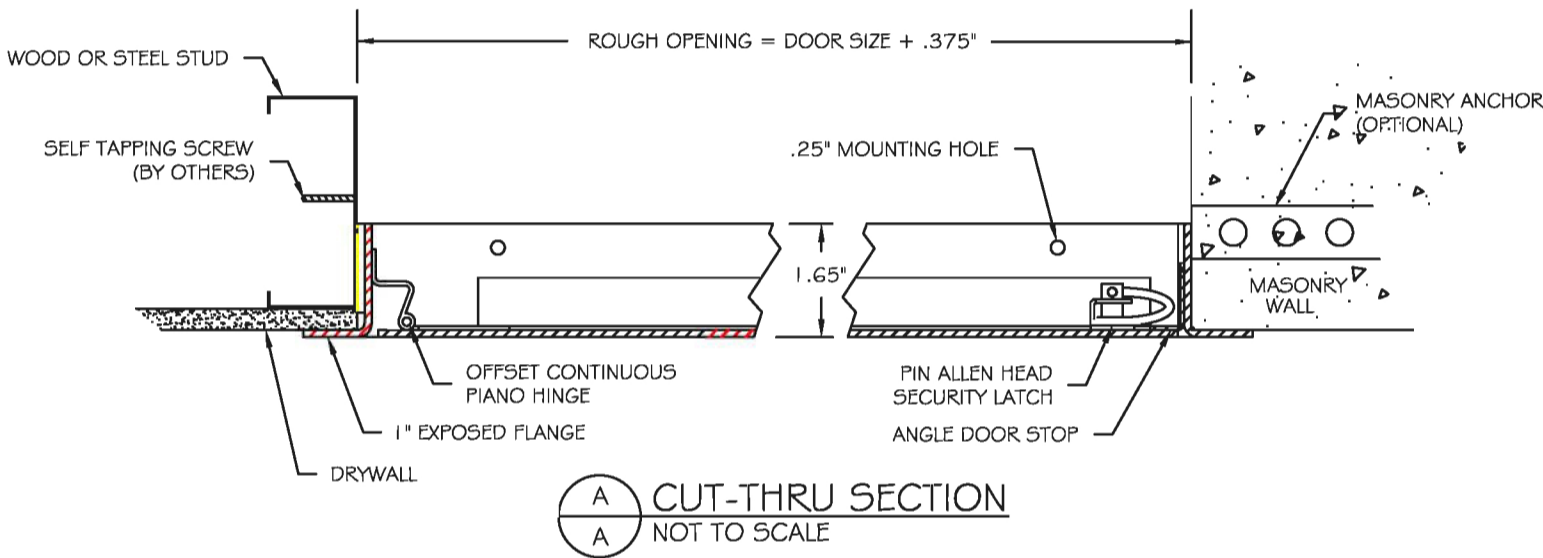
FRONT ELEVATION  
NOT TO SCALE

### SPECIFICATIONS

- 12 GAUGE (2.667mm) COLD ROLLED STEEL FRAME
- 12 GAUGE (2.667mm) COLD ROLLED STEEL DOOR
- BAKED ON POWDER COAT FINISH
- CONCEALED CONTINUOUS PIANO HINGE
- PINNED ALLEN HEAD SECURITY CAM LATCH
- FRAMES ARE PROVIDED WITH .25" MOUNTING HOLES

### OPTIONS

- ☐ MASONRY ANCHORS ATTACHED
- ☐ GALVANIZED BONDERIZED STEEL
- ☐ STAINLESS STEEL WITH A #4 SATIN FINISH
- ☐ PREPARATION FOR 1.125" MORTISE LOCK (LOCK PROVIDED BY OTHERS OR BY LARSENS)
- ☐ PREPARATION FOR HEAVY DUTY DETENTION DEADBOLT LOCK (LOCK PROVIDED BY OTHERS OR BY LARSENS)



CUT-THRU SECTION  
NOT TO SCALE

# L-DPM SERIES

## ALL PURPOSE MEDIUM SECURITY NON-RATED ACCESS PANEL

### Standard Features:

Door:	12 gauge (2.67 mm thick) cold rolled steel
Frame:	12 gauge (2.67 mm thick) cold rolled steel with 1" flange
Hinge:	Concealed continuous piano hinge
Latch:	Pinned allen head security cam latch(es) Optional: mortise cylinder preparation (cylinder provided by Larsens or others) or heavy duty detention lock preparation (deadbolt lock provided by Larsens or others)
Finish:	Baked on powder coat finish

### Specifications:

Frame and door shall be 12 gauge cold rolled steel. Flange shall be 1" wide. Hinge shall be concealed continuous type. Latch(es) shall be pinned allen head security cam type (optional: preparation to receive 1-1/8" mortise cylinder – cylinder provided by Larsens or others; or heavy duty detention lock preparation – deadbolt lock provided by Larsens or others). Finish shall be baked on powder coat.

Installation shall be in accordance with manufacturer's instructions. Manufacturer shall guarantee against defects in material and workmanship for a period of one year.

### Standard Sizes:

Std sizes (in)	Std Sizes (mm)	Weight/Latches	Std Sizes (in)	Std Sizes (mm)	Weight/Latches
06x06	152x152	18/1	20x30	508x762	56/3
08x08	203x203	20/1	22x22	559x559	49/2
10x10	254x254	23/1	22x30	559x762	58/3
12x12	305x305	24/1	24x24	610x610	52/4
12x18	305x457	30/1	24x30	610x762	60/5
12x24	305x610	35/2	24x36	610x914	68/5
14x14	356x356	26/1	24x48	610x1219	94/5
16x16	406x406	32/1	30x30	762x762	70/5
16x20	406x508	36/2	32x32	813x813	76/5
18x18	457x457	36/2	36x36	914x914	95/6
18x24	457x610	48/2	36x48	914x1219	123/7

All units are hinged on the second dimension (height). Rough opening is door size plus ¼".