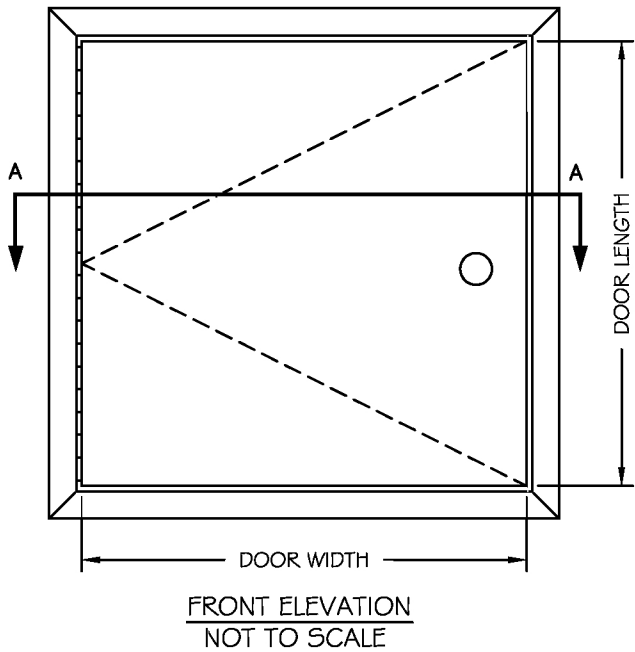


L-DPFB SERIES

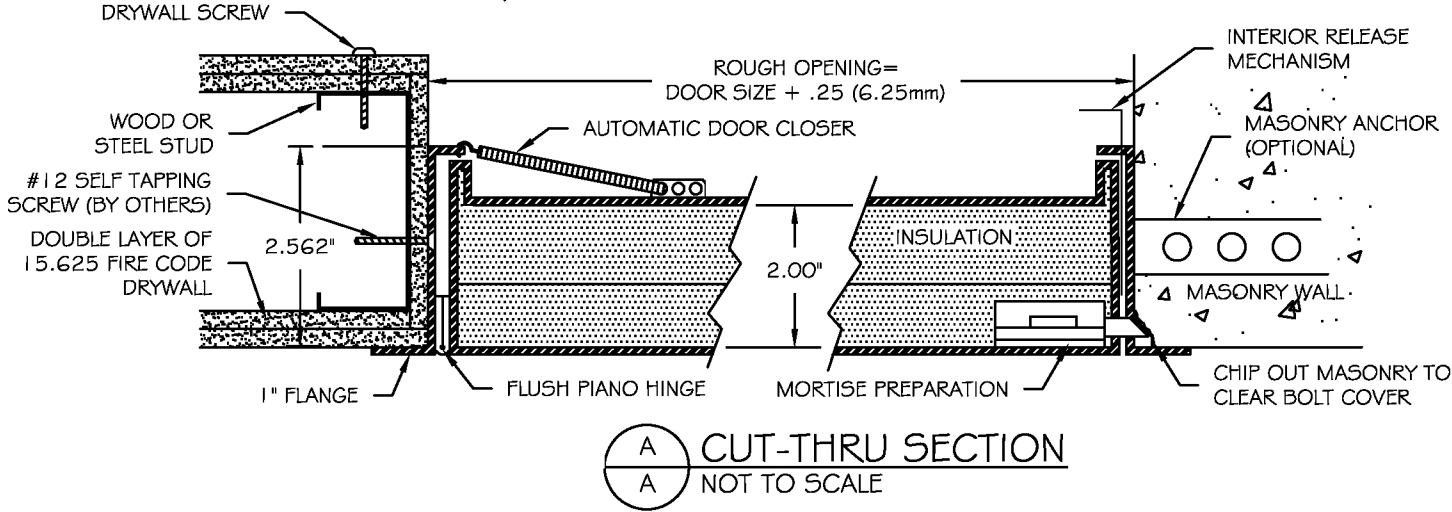
SECURITY INSULATED FIRE RATED
ACCESS PANELS FOR WALLS ONLY - ANY SURFACE



LISTINGS
1 1/2 HR. "B" LABEL



**CERTAIN DETENTION LOCKS WILL VOID
UL LISTING, CONSULT LARSENS**



LARSEN'S MANUFACTURING CO.

7421 COMMERCE LANE
MINNEAPOLIS, MN 55432
PHONE: 800-527-7367
FAX: 763-571-6900

PROJECT:			
CONTRACTOR:			
DISTRIBUTOR:			
DRAWN BY: GML	DATE: 11-03-2006	QUANTITY:	TITLE: L-DPFB.DOC

L-DPFB SERIES

ALL PURPOSE SECURITY FIRE RATED ACCESS PANEL (FOR WALLS ONLY)

Standard Features:

Door:	14 gauge (1.90 mm thick) cold rolled steel
Frame:	16 gauge (1.52 mm thick) cold rolled steel with 1" flange
Hinge:	Flush continuous piano hinge
Latch:	Mortise cylinder preparation (cylinder provided by Larsens or others)
Finish:	Baked on powder coat finish Optional: galvanized bonderized steel or stainless steel with #4 satin polish finish
Insulation:	2" thick fire rated mineral fiber

Specifications:

Frame shall be 16 gauge cold rolled steel with 1" flange. Door shall be fabricated from 14 gauge cold rolled steel, insulated sandwich type construction. Door shall be self-latching with automatic closer and interior latch release mechanism. Hinge shall be flush continuous piano type. Latch(es) shall be prepared to receive 1-1/8" mortise cylinder – cylinder provided by Larsens or others (optional: heavy duty detention lock provided by Larsens or others before manufacturing process). ****Certain detention locks will void U.L. label, Consult Larsens**** This assembly shall carry a 1-1/2 hour U.L. "B" label for walls only. Finish shall be baked on powder coat (optional: galvanized bonderized steel or stainless steel with #4 satin polish finish).

Installation shall be in accordance with manufacturer's instructions. Manufacturer shall guarantee against defects in material and workmanship for a period of one year.

Standard Sizes:

Std sizes (in)	Std Sizes (mm)	Weight/Latches	Std Sizes (in)	Std Sizes (mm)	Weight/Latches
08x08	203x203	11/1	22x30	559x762	32/1
10x10	254x254	12/1	22x36	559x914	41/2
12x12	305x305	15/1	24x24	610x610	28/1
12x18	305x457	18/1	24x30	610x762	34/1
12x24	305x610	20/1	24x36	610x914	43/2
14x14	356x356	16/1	24x48	610x1219	52/2
16x16	406x406	18/1	30x30	762x762	51/1
18x18	457x457	20/1	32x32	813x813	53/1
18x24	457x610	26/1	36x36	914x914	55/2
20x30	508x762	30/1	36x48	914x1219	75/2
22x22	559x559	28/1	48x48	1219x1219	110/2

All units are hinged on the second dimension (height). Rough opening is door size plus ¼". These panels are designed for use in wall applications only.