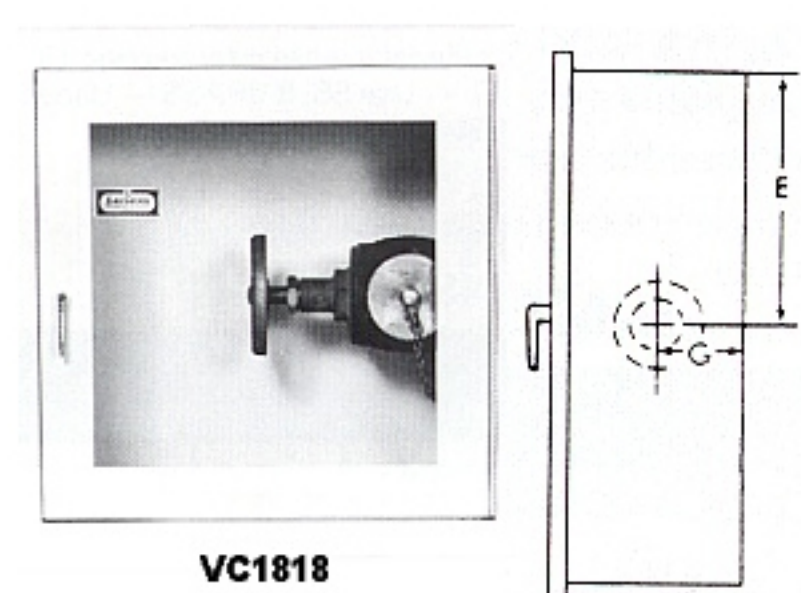


## FIRE HOSE AND VALVE CABINETS

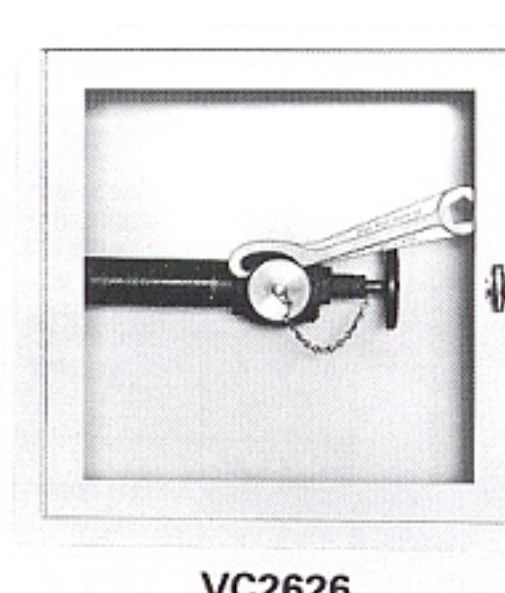
### VC1818 and VC2626 SERIES

#### TO SPECIFY THE VC1818 and VC2626 SERIES:

- Insert, after "VC," the appropriate prefix for the trim and door material (please refer HOW TO SPECIFY AND ORDER LARSEN'S FIRE HOSE AND VALVE CABINETS).  
If STEEL - Use S.  
If ALUMINUM - Use AL.  
If STAINLESS STEEL - Use SS.  
If BRASS - Use B. If BRONZE - Use BZ.
- Select the required model number from the table below.
- Select the door style from the illustrations on HOW TO SPECIFY AND ORDER LARSEN'S FIRE HOSE AND VALVE CABINETS.



VC1818



VC2626

The VC2626 Series is designed specifically to meet fire codes which require the continuous revolution of a 12" long spanner wrench.

Model Number	Trim Style and Projection	Inside Box Dimensions H x W x D	Outside Trim Dimensions H x W***	Rough Opening H x W x D	Knockout Locations** E G	Interior Capacity
VC1818-R	Rec. 5/16	18 x 18 x 8	21½ x 21½	19 x 19 x 8¼	9" 4"	One 2½" Fire Dept. valve with cap and chain
FS VC1818-R	Rec. 5/16	18 x 18 x 8	21½ x 21½	20 <sup>1/8</sup> x 20 <sup>1/8</sup> x 9 <sup>1/8</sup>	--	
VC1818-RK	Semi-Rec. 1¼	18 x 18 x 8	21½ x 21½	19 x 19 x 7¼	9" 4"	
FS VC1818-RK	Semi-Rec. 1¼	18 x 18 x 8	21½ x 21½	20 <sup>1/8</sup> x 20 <sup>1/8</sup> x 8 <sup>1/8</sup>	--	
VC1818-RL	Semi-Rec. 2½	18 x 18 x 8	21½ x 21½	19 x 19 x 6	9" 4"	
FS VC1818-RL	Semi-Rec. 2½	18 x 18 x 8	21½ x 21½	20 <sup>1/8</sup> x 20 <sup>1/8</sup> x 7	--	
VC1818-RT	Trimless	18 x 18 x 8	--	--x --x8½†	9" 4"	
VC1818-SM	Surface Mtd.	21½ x 21½ x 8½	21½ x 21½	--	--	One 2½" Fire Dept. valve with cap and chain
VC2626-R	Rec. 5/16	26 x 26 x 8	29½ x 29½	27 x 27 x 8¼	13" 4"	
FS VC2626-R	Rec. 5/16	26 x 26 x 8	29½ x 29½	28 <sup>1/8</sup> x 28 <sup>1/8</sup> x 9 <sup>1/8</sup>	--	
VC2626-RK	Semi-Rec. 1¼	26 x 26 x 8	29½ x 29½	27 x 27 x 7¼	13" 4"	
FS VC2626-RK	Semi-Rec. 1¼	26 x 26 x 8	29½ x 29½	28 <sup>1/8</sup> x 28 <sup>1/8</sup> x 8 <sup>1/8</sup>	--	
VC2626-RL	Semi-Rec. 2½	26 x 26 x 8	29½ x 29½	27 x 27 x 6	13" 4"	
FS VC2626-RL	Semi-Rec. 2½	26 x 26 x 8	29½ x 29½	28 <sup>1/8</sup> x 28 <sup>1/8</sup> x 7	--	
VC2626-RT	Trimless	26 x 26 x 8	--	--x --x8½†	13" 4"	
VC2626-SM	Surface Mtd.	29½ x 29½ x 8½	29½ x 29½	--	--	

**NOTE: "FS" models denote Larsen's "Flame-Shield" fire-rated cabinets. When specifying Larsen's "Flame-Shield" fire-rated cabinet option for the VC1818 and VC2626 Series, refer to the dimension chart above and select the models with an "FS" prefix. No knock-outs are provided with fire-rated cabinets. Pipe holes must be drilled by installer and complete instructions are supplied with each fire-rated valve cabinet. For complete details of the "Flame-Shield" option.**

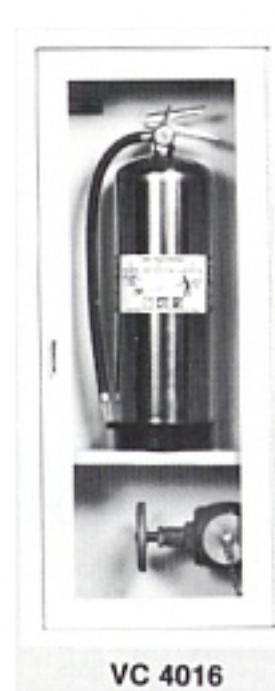
### VC4016 and VC3616 SERIES

Larsen's exclusive VC4016 and VC3616 Series provide an attractive, innovative, and economical method of housing a fire extinguisher and a fire department valve. Both the VC4016 and VC3616 support the extinguisher with a heavy gauge shelf. The shelf in both units is located 12" up from the bottom of the cabinet, leaving approximately 28" for the extinguisher height in the VC4016 and 24" in the VC3616.

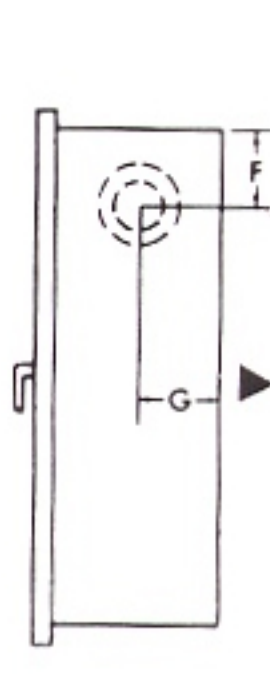
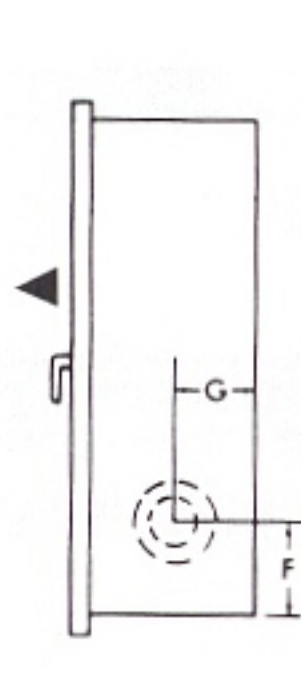
A more economical option is available for both units. As pictured at the left, the shelf can be deleted with the valve installed at the top of the cabinet. With this option, the "F" dimension for the knockout location (see chart at left) is measured from the top of the cabinet. To specify this unit, see below.

#### TO SPECIFY THE VC4016 and VC3616 SERIES:

- Insert, after "VC," the appropriate prefix for the trim and door material (please refer to page 13).  
If STEEL - Use S. If ALUMINUM - Use AL. If STAINLESS STEEL - Use SS.  
If BRASS - Use B. If BRONZE - Use BZ.
- Select the required model number from the table below.
- If the Gemini Door is required, see DESIGNER LINE DOOR STYLE OPTIONS - GEMINI and use the prefix "G" before the model number. If the Occult Door is required, refer to OCCULT SERIES and use the prefix "O" before the model number.
- Select the door style from the illustrations.
- If the shelf is to be deleted with the valve installed at the top, insert the prefix "T" before "VC" and note the appropriate knockout location.



VC 4016



T-VC 4016

Model Number	Trim Style and Projection	Inside Box Dimensions H x W x D	Outside Trim Dimensions H x W***	Rough Opening H x W x D	Knockout Locations** E F G	Interior Capacity
VC4016-R	Rec. 5/16	40 x 16 x 8	43½ x 19½	41 x 17 x 8¼	6" 4"	One 2½" Fire Dept. valve with cap and chain and a Fire Extinguisher
FS VC4016-R	Rec. 5/16	40 x 16 x 8	43½ x 19½	42 <sup>1/8</sup> x 18 <sup>1/8</sup> x 9 <sup>1/8</sup>	--	
VC4016-RK	Semi-Rec. 1¼	40 x 16 x 8	43½ x 19½	41 x 17 x 7¼	6" 4"	
FS VC4016-RK	Semi-Rec. 1¼	40 x 16 x 8	43½ x 19½	42 <sup>1/8</sup> x 18 <sup>1/8</sup> x 8 <sup>1/8</sup>	--	
VC4016-RL	Semi-Rec. 2½	40 x 16 x 8	43½ x 19½	41 x 17 x 6	6" 4"	
FS VC4016-RL	Semi-Rec. 2½	40 x 16 x 8	43½ x 19½	42 <sup>1/8</sup> x 18 <sup>1/8</sup> x 7	--	
VC4016-RT	Trimless	40 x 16 x 8	--	--x --x8½†	6" 4"	
VC4016-SM	Surface Mtd.	43½ x 19½ x 8½	43½ x 19½	--	--	One 2½" Fire Dept. valve with cap and chain and one of the following Fire Ext. MP2½, MP5, DC2½, DC5, MP6, MP10, DC6, DC10, CD5, HT5, HT11, HT15½, WC6-L
VC3616-R	Rec. 5/16	36x 16 x 8	39½ x 19½	37 x 17 x 8¼	6" 4"	
FS VC3616-R	Rec. 5/16	36x 16 x 8	39½ x 19½	38 <sup>1/8</sup> x 18 <sup>1/8</sup> x 9 <sup>1/8</sup>	--	
VC3616-RK	Semi-Rec. 1¼	36x 16 x 8	39½ x 19½	37 x 17 x 7¼	6" 4"	
FS VC3616-RK	Semi-Rec. 1¼	36x 16 x 8	39½ x 19½	38 <sup>1/8</sup> x 18 <sup>1/8</sup> x 8 <sup>1/8</sup>	--	
VC3616-RL	Semi-Rec. 2½	36x 16 x 8	39½ x 19½	37 x 17 x 6	6" 4"	
FS VC3616-RL	Semi-Rec. 2½	36x 16 x 8	39½ x 19½	38 <sup>1/8</sup> x 18 <sup>1/8</sup> x 7	--	
VC3616-RT	Trimless	36x 16 x 8	--	--x --x8½†	6" 4"	
VC3616-SM	Surface Mtd.	39½ x 19½ x 8½	39½ x 19½	--	--	

**NOTE: "FS" models denote Larsen's "Flame-Shield" fire-rated cabinets. When specifying Larsen's "Flame-Shield" fire-rated cabinet option for the VC3616 and VC4016 Series, refer to the dimension chart above and select the models with an "FS" prefix. No knock-outs are provided with fire-rated cabinets. Pipe holes must be drilled by installer and complete instructions are supplied with each fire-rated valve cabinet. For complete details of the "Flame-Shield" option.**

\*\* No knockouts are provided for surface-mounted cabinets unless specified.

† Trimless cabinets must be installed before the drywall. Plaster stop must be behind the drywall.

Trimless are not recommended for block wall installation.

\*\*\* Deduct ¼ from HxW Dimensions for Cabinets with Aluminum Door & Trim. This does not apply to "FS" fire-rated option.