

## SUBMITTAL: MODEL TM FLUSH ACCESS PANELS

PAGE 1 OF 1

Qty	A Model Size	B Outside Frame Dimensions		C Wall Opening Dimensions		Approx. Ship Wt. in lbs	Latch(es)
	Width X Ht	Width	Height	Width	Height		
-	6" x 6"	8"	8"	6 3/8"	6 3/8"	4	1
-	8" x 8"	10"	10"	8 3/8"	8 3/8"	4	1
-	8" x 12"	10"	14"	8 3/8"	2 3/8"	6	1
-	10" x 10"	12"	12"	10 3/8"	10 3/8"	6	1
-	12" x 12"	14"	14"	12 3/8"	12 3/8"	7	1
-	12" x 16"	14"	18"	12 3/8"	16 3/8"	9	1
-	12" x 18"	14"	20"	12 3/8"	18 3/8"	10	1
-	12" x 24"	14"	26"	12 3/8"	24 3/8"	12	2
-	14" x 14"	16"	16"	14 3/8"	14 3/8"	9	1
-	16" x 16"	18"	18"	16 3/8"	16 3/8"	11	1
-	16" x 20"	18"	22"	16 3/8"	20 3/8"	13	2
-	18" x 18"	20"	20"	18 3/8"	18 3/8"	12	3
-	20" x 24"	22"	26"	20 3/8"	24 3/8"	15	4
-	20" x 30"	22"	32"	20 3/8"	30 3/8"	20	4
-	22" x 22"	24"	24"	22 3/8"	22 3/8"	17	4
-	22" x 30"	24"	32"	22 3/8"	30 3/8"	22	4
-	22" x 36"	24"	38"	22 3/8"	36 3/8"	24	5
-	24" x 24"	26"	26"	24 3/8"	24 3/8"	18	4
-	24" x 30"	26"	32"	24 3/8"	30 3/8"	22	5
-	24" x 36"	26"	38"	24 3/8"	36 3/8"	25	5
-	30" x 30"	32"	32"	30 3/8"	30 3/8"	30	5
-	36" x 36"	38"	38"	36 3/8"	36 3/8"	41	5
-	36" x 48"	38"	50"	36 3/8"	48 3/8"	51	6

**22 Models in bold above are stocked in one or more of our warehouse & manufacturing locations. See the Quick Ship Listing.**

**We specialize in producing panels with custom sizes and features.**

Contact Customer Service with your requirements.

Model TM for Masonry, Tile and Wallboard is an all purpose 16 gauge steel access door affords fast and convenient access for inspection or service to vital components of plumbing, heating, air conditioning and/or electrical systems. The exposed 1" frame flange adds rigidity and conceals rough wall openings. The concealed hinged door is mounted to the frame and swings open for ease in servicing and results in a door always closing square in place. Nails, bolts or masonry anchors may be used to fasten the TM model securely in place.

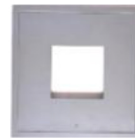
### SPECIFICATIONS

**Frame:** 16 gauge steel with 1" wall flange. 1-5/8" depth.

**Door:** 16 gauge steel mounted with 90° continuous, concealed hinge.

**Finish:** Gray powder coat primer.

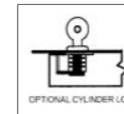
**Lock:** Flush screwdriver-operated steel cam - C.



View Window



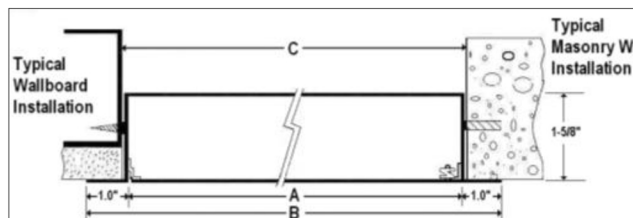
Louvered Vents



OPTIONAL CYLINDER LOCK

**Order Format Example: TM-2424C W**

TM - **Width** **Height** **Lock (C Std or Option Code)** **Special Finish**



### OPTIONAL FEATURES AT ADDITIONAL COST:

- ☐ 14 Gauge Construction
- ☐ Double door
- ☐ Louvered vents
- ☐ Plexiglass view window
- ☐ (TMG) Galvanized finish
- ☐ Rain Hood
- ☐ Gasketing
- ☐ (RD) Removable Door (no hinges)
- ☐ Optional color Code: \_\_\_\_\_ - see catalog or [website](#)
- W**-White, **R**-Red, **BK**-Black, **S**-sand
- FBK**-Flat Black, **AB**-AMS Beige, **B**-Bronze
- SB**-SC Flat Beige, **SA** - Satin Aluminum
- ☐ Custom colors - submit paint chip.
- ☐ (L) Cylinder lock installed
- ☐ (MP) Mortise cam lock prep
- ☐ (MPI) Mortise cam lock (06431) installed
- ☐ (UM) Mortise slam lock prep
- ☐ (UMI) Mortise slam lock (06431) installed
- ☐ (LL) Mortise deadbolt prep
- ☐ (LLI) Mortise deadbolt lock (06431) installed
- ☐ (KK) Knob cam
- ☐ (CT) Torx head cam
- ☐ (CA) Hex head cam
- ☐ (SHC) Spanner head cam
- ☐ Other 1-1/8" dia. mortise cylinder by request